



ISW Series

Ethernet PoE Switch

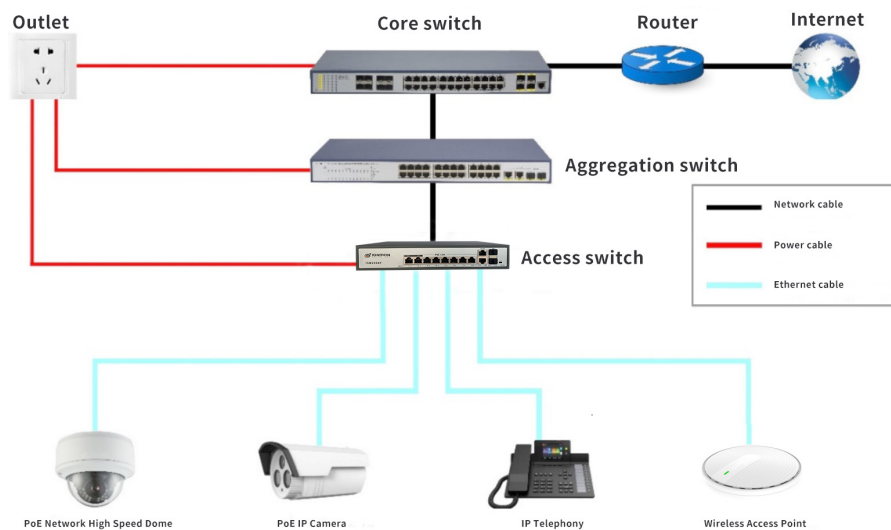
Product Introduction

ISW Series switches are unmanaged Gigabit PoE access switches, designed for SOHO and SMB users. This series of PoE switches can provide a 10/100/1000M Ethernet connection. The PoE ports meet the IEEE 802.3af or 802.3at standard.




All RJ45 ports support auto MDI/MDIX. IEEE 802.3x flow control for full-duplex mode and backpressure for half-duplex mode alleviate the traffic congestion, ensuring a high-performance network.

Product Feature

- IEEE 802.3 af/IEEE 802.3 at standards: automatically detecting and supplying power to the PoE-enabled devices
- The max power supply per PoE port: up to 30W
- Intelligent power supply management: running safely and steadily
- PoE power priority function: ensuring continuous power supply to critical network nodes
- PoE port protective function: protecting PoE equipment from power surges
- Flow control mode: IEEE 802.3x full-duplex flow control and half-duplex backpressure standard
- Zero configuration feature: automatically provisioned to adaptive devices



Product Specification

Item/Product Model		ISW204P	ISW208P	ISW216P
				
Port	PoE port	4 x GE RJ45 ports	8 x GE RJ45 ports	16 x GE RJ45 ports
	Uplink port	1 x GE RJ45 port 1 x GE SFP port (without optical module)	2 x GE RJ45 ports 2 x GE SFP ports (without optical module)	2 x GE RJ45 ports
PoE power supply	PoE power priority	Supported	Supported	Supported
	Max PoE wattage per port	30W	30W	30W
	Max power consumption	78W	120W	250W
Switching mode		Store-and-forward	Store-and-forward	Store-and-forward
Flow control mode		IEEE 802.3x full-duplex flow control and half-duplex backpressure	IEEE 802.3x full-duplex flow control and half-duplex backpressure	IEEE 802.3x full-duplex flow control and half-duplex backpressure
Performance	Port switching capacity	12Gbps	22Gbps	36Gbps
	Packet forwarding rate	8.928Mpps	16.368Mpps	26.784Mpps
	MAC address entries	8K	8K	8K
Standards and protocols		IEEE802.3i 10 BASE-T	IEEE802.3i 10 BASE-T	IEEE802.3i 10 BASE-T
		IEEE802.3u 100 BASE-TX	IEEE802.3u 100 BASE-TX	IEEE802.3u 100 BASE-TX
		IEEE802.3ab 1000 BASE-T	IEEE802.3ab 1000 BASE-T	IEEE802.3ab 1000 BASE-T
		IEEE802.3z 1000 BASE-LX	IEEE802.3z 1000 BASE-LX	IEEE802.3z 1000 BASE-LX
		IEEE802.3x Flow Control	IEEE802.3x Flow Control	IEEE802.3x Flow Control
		IEEE802.3af Power over Ethernet	IEEE802.3af Power over Ethernet	IEEE802.3af Power over Ethernet
		IEEE802.3at Power over Ethernet	IEEE802.3at Power over Ethernet	IEEE802.3at Power over Ethernet
		IEEE802.3az EEE	IEEE802.3az EEE	IEEE802.3az EEE
Power supply		AC, 110~240V, 50/60Hz	AC, 100~240V, 50/60Hz	AC, 100~240V, 50/60Hz
Dimensions		200*118*44mm	270*180*44mm	270*180*44mm
Cable requirement		UTP Cat 5 cable or above	UTP Cat 5 cable or above	UTP Cat 5 cable or above
Operating temperature		-10°C ~+55°C	5°C ~+45°C	-10°C ~+45°C
Operating humidity		10% ~90%	10% ~90%	10% ~90%
Storage temperature		-20°C ~+70°C	-20°C ~+70°C	-20°C ~+70°C
Storage humidity		5% ~95%	5% ~95%	5% ~95%